

**SF Firmware Support for
Microsoft Windows
And
Update Procedure
For SF100/SF600/SF600Plus**

Version 2.2



I. Firmware Support for Microsoft Windows

Please check the Windows OS version and refer to the following table before you upgrading to new firmware and software for SF100/SF600/SF600Plus.

If you are using Windows 8.1/Windows 10, please make sure the programmer firmware and SF software are the latest version. For older Windows OS version, there's no need to upgrade the programmer FW to the latest version.

User can download the latest version on DediProg website.

www.dediprogram.com/download

SF100

Windows OS	Current Firmware Version	Upgrade Firmware	Upgrade Software
Win8.1/Win10	6.x.xx	6.5.03	SF 6.0.5.13
	5.x.xx	5.5.03	SF 6.0.5.13
	1.x.x to 4.x.x	Please contact DediProg sales	
Before Win 8.1	5.x.xx	Earlier than 5.2.0	SF 6.0.5.13
	1.x.x to 4.x.x	There are no restriction	

* The first number of the firmware version represents your hardware version. Find the compatible version for your device accordingly.

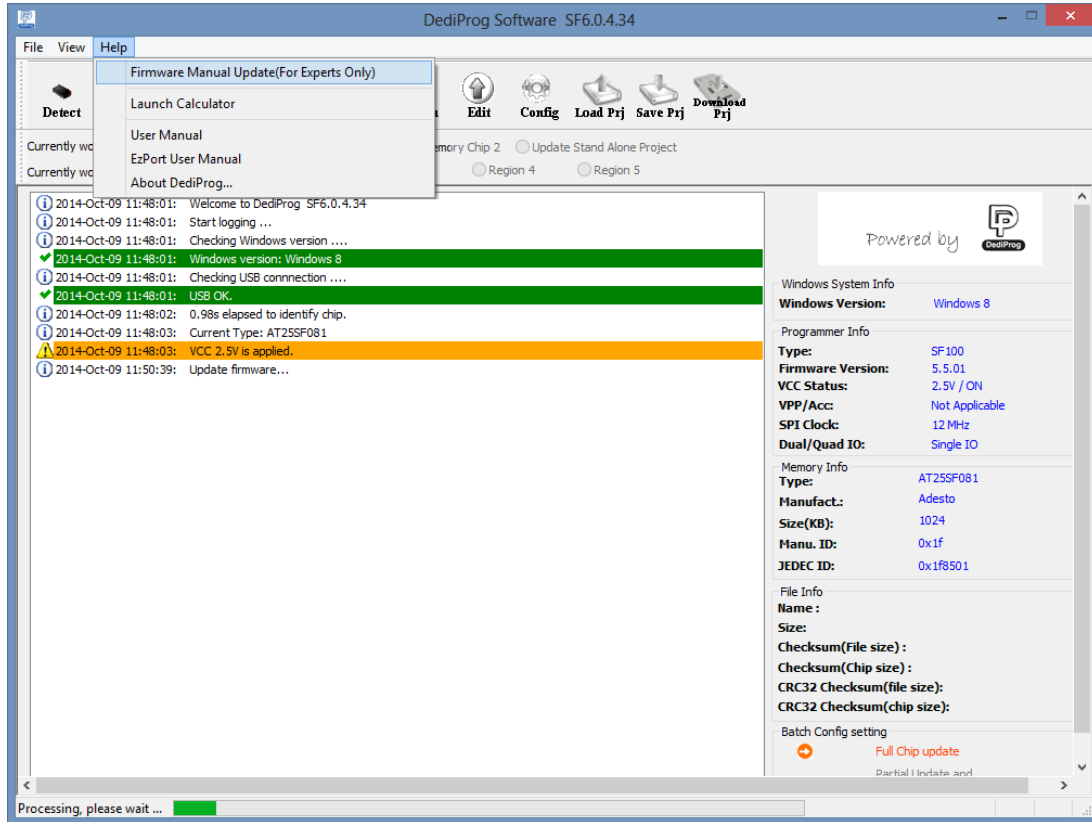
SF600 / SF600Plus

Windows OS	Current Firmware Version	Upgrade Firmware	Upgrade Software
Win8.1/Win10	6.x.x	6.9.0	SF 6.0.5.13
	7.x.x	7.2.16 (Please contact DediProg sales)	SF 6.0.5.13
Before Win 8.1	6.x.x	Earlier than 6.9.0	There are no restriction

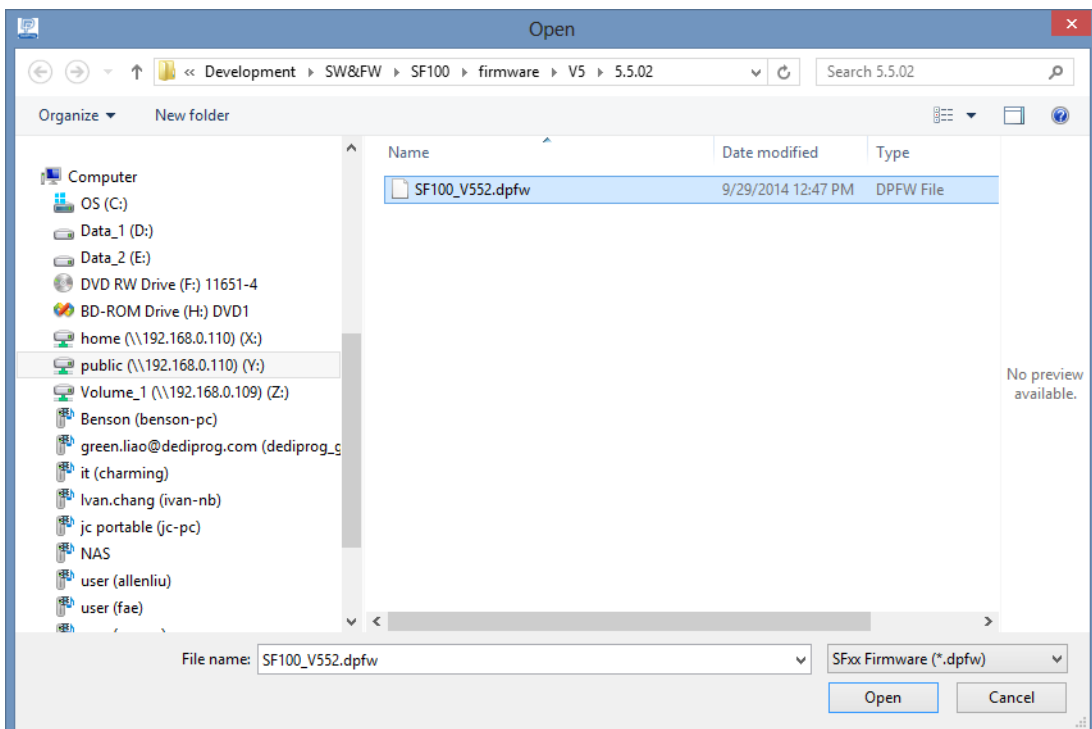
*Please note that support and updates for older hardware versions are no longer available.

II. How to update firmware:

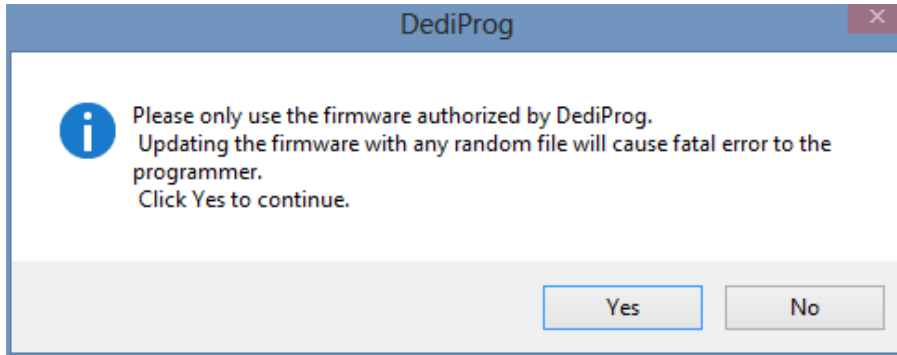
1. Help → Firmware Manual Update(For Experts Only)



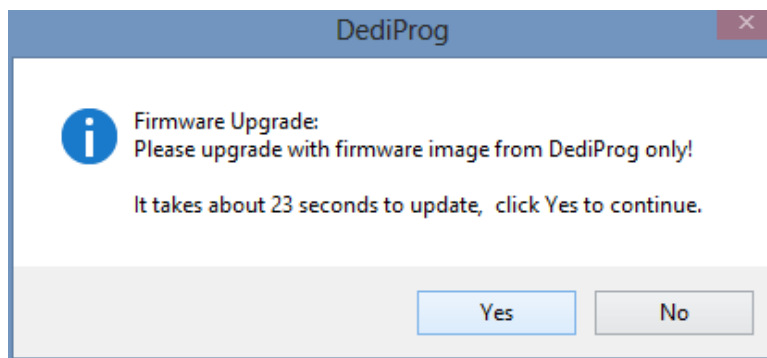
2. Choose .dpfw file and click “Open”



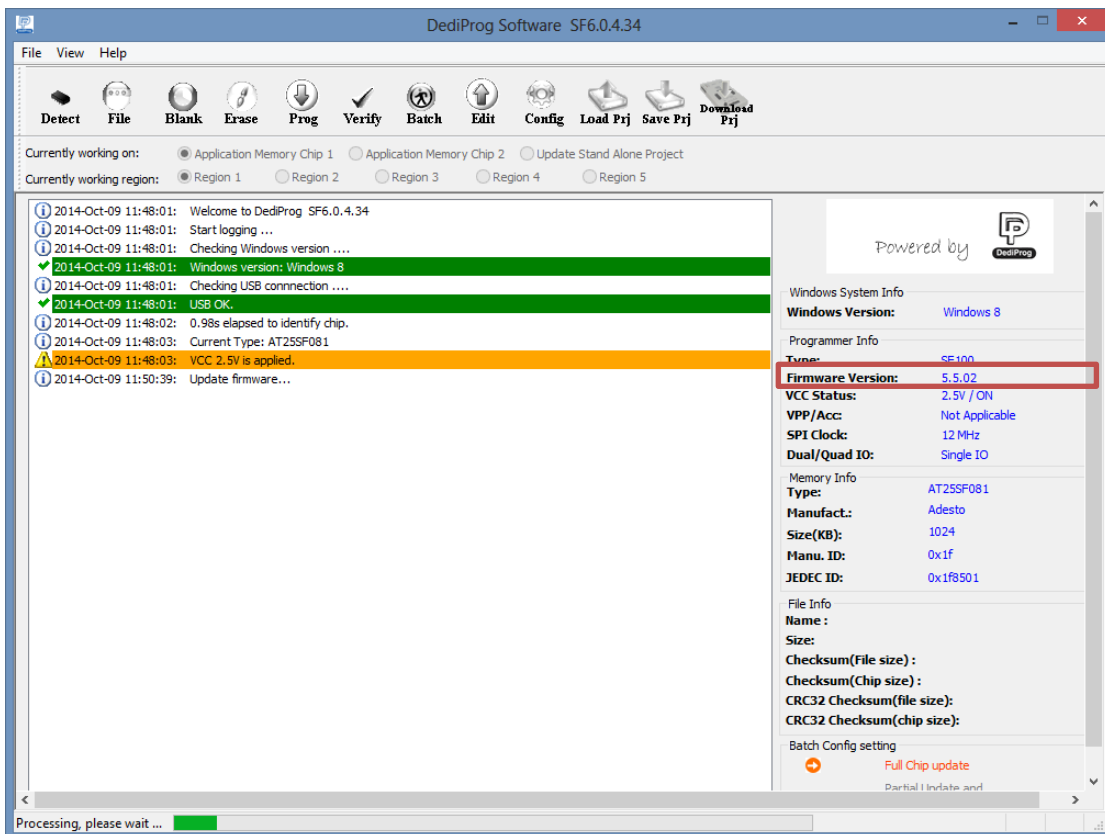
3. Click "Yes" to continue



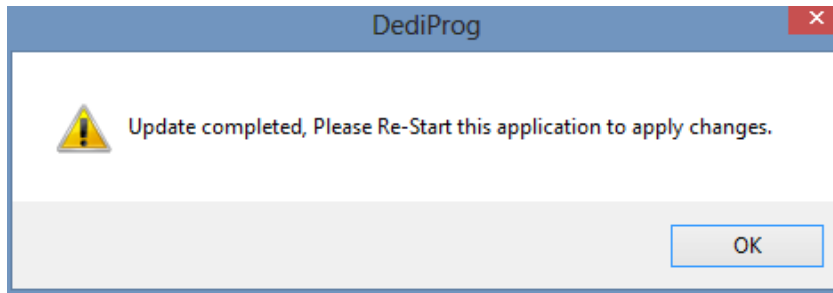
4. Click "Yes" to continue



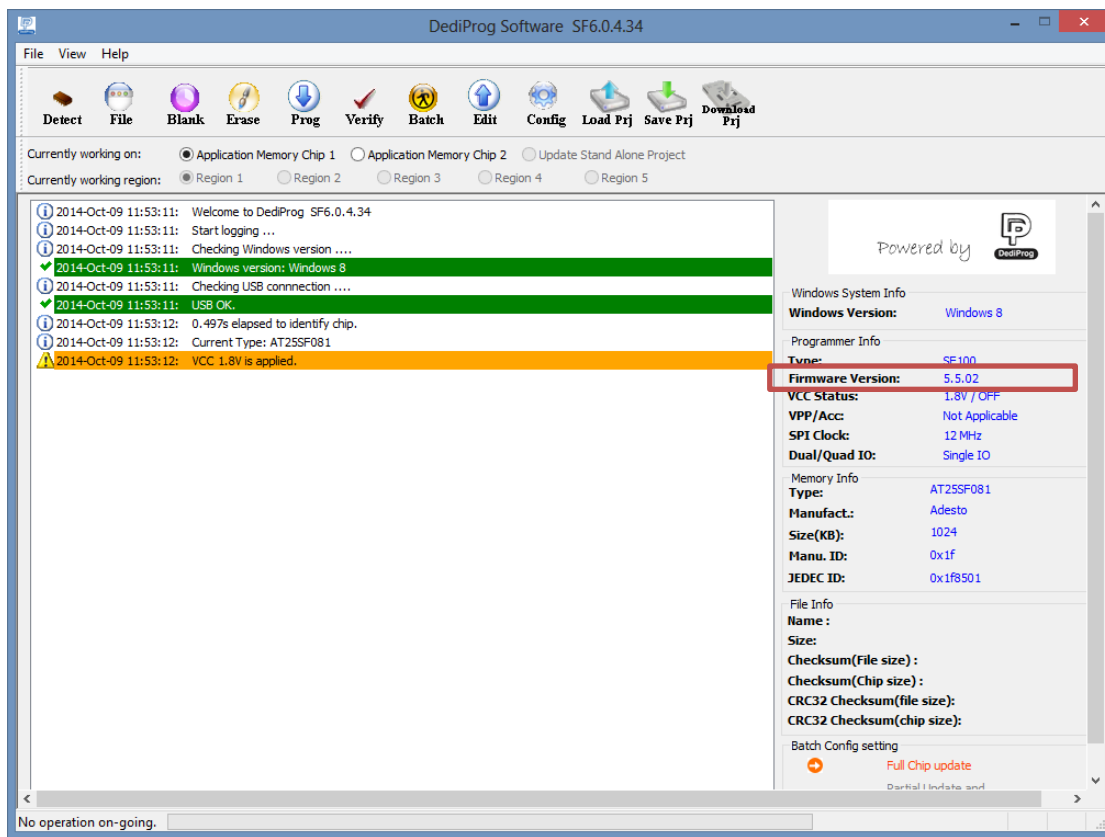
5. Firmware starts updating.



6. Click “OK” after firmware update then re-plug device.

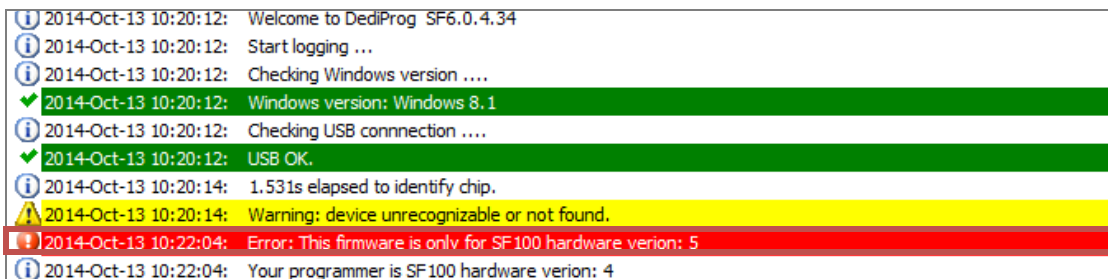


7. Restart software and check firmware version is the latest.



NOTE:

The error message will show when the older hardware version of SF100 updated the new firmware version.



III.Revision History

Date	Version	Changes
10/15/2014	1.0	Initial English version release
01/21/2016	2.0	Adding "Firmware Support for Microsoft Windows
07/12/2016	2.1	Change SF600 v7 version and software version
10/14/2016	2.2	Change the software version

DediProg Technology Co., Ltd

- **Taiwan Headquarter** **TEL: 886-2-2790-7932** FAX: 886-2-2790-7916
4F., No.7, Ln. 143, Xinming Rd., Neihu Dist., Taipei City 114, Taiwan
- **Shanghai Office** **TEL: 86-21-5160-0157** **FAX: 86-21-6126-3530**
Room 503, Block E, No.1618, Yishan Road, Shanghai, China
- **U.S. Office** **TEL: +1 480-775-5139**
2266 South Dobson Road, Suite 200, Mesa, AZ, 85202, USA

Technical Support : support@dediprog.com

Sales Support : sales@dediprog.com

www.DediProg.com

Information furnished is believed to be accurate and reliable. However, DediProg assumes no responsibility for the consequences of use of such information or for any infringement of patents or other rights of third parties which may result from its use. Specifications mentioned in this publication are subject to change without notice.

This publication supersedes and replaces all information previously supplied.

All rights reserved

Printed in Taiwan.
